

Version MTRR.00#PPF
Collection Taps

TECHNICAL FEATURES

Materials/Finishes PVD Gunmetal
Function Extracting/Filtering
Cut-out Cut-out diameter 35 mm
Dimensions Single-lever sink mixer with round swivel spout and pull out hand shower 3/8" female connection hoses cm

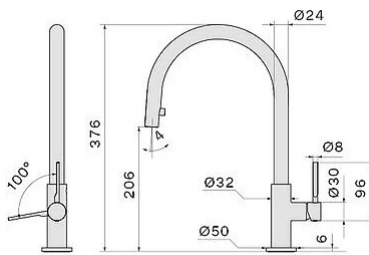
Notes

WEIGHTS AND VOLUMES

Gross weight 2.71 kg
Net weight 2.71 kg
Volume 0.02 m3
Packaging dimensions L 620 x H 120 x P 290 mm



Photograph is for information purposes only. May not correspond to the selected version



FLOW RATE / PRESSURE