

Version MTRR.00#PGF

Collection Taps

TECHNICAL FEATURES

Materials/Finishes PVD Gold

Function Extracting/Filtering

Cut-out Cut-out diameter 35 mm

Dimensions Single-lever sink mixer with round swivel spout and pull out hand shower 3/8" female connection hoses cm

Notes

WEIGHTS AND VOLUMES

Gross weight 2.71 kg

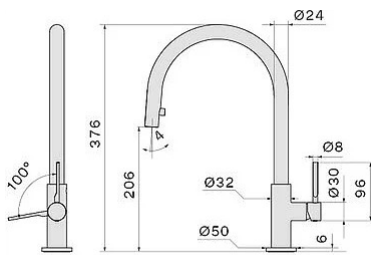
Net weight 2.71 kg

Volume 0.02 m3

Packaging dimensions L 620 x H 120 x P 290 mm



Photograph is for information purposes only. May not correspond to the selected version



FLOW RATE / PRESSURE